



HOUSE OF COMMONS
CHAMBRE DES COMMUNES
CANADA



ALEXANDRA MENDÈS

Member of Parliament
Brossard—Saint-Lambert



@AlexandraMendesLiberal2015



@AlexandraBrStL

Spring 2021

A MESSAGE FROM YOUR MP

The Champlain Bridge is a gateway to our riding and a symbol of our growth. This recognisable engineering achievement is a testament to our ingenuity and determination to do better.

Even with the new bridge in place and being used by thousand of people everyday, much work is still being done to deconstruct and repurpose the areas around the Champlain corridor. The Ponts Jacques Cartier et Champlain Incorporée (PJCCI) is responsible for coordinating these ongoing projects. Their tireless work to ensure the safety of our community and the beautification of our region often goes unnoticed.

I therefore wanted to share with you some of the work that they are currently undertaking on the deconstruction of the old Champlain Bridge.

Over the coming months and years we will continue to see the results of this work and beautification of our riding.

I wish to thank PJCCI for their dedication and vision as our communities rely on this vital infrastructure.

Sincerely,

Alexandra Mendès, MP
Brossard—Saint-Lambert

INFO

OTTAWA

The Valour Building
Room 1230
Ottawa ON K1A 0A6
Tel.: 613 995-9301

CONSTITUENCY

6955, Taschereau Blvd.
Suite 225
Brossard, (Québec) J4Z 1A7
Tel: 450 466-6872



alexandra.mendes@parl.gc.ca



<http://alexandramendes.libparl.ca>

UPDATE ON WORK SINCE THE START OF THE DECONSTRUCTION

Île des Sœurs

The bridge deconstruction from the Île des Sœurs jetty is going well. The teams have just completed the second demolition cycle for one of the spans. A demolition cycle, which lasts approximately two weeks, includes preparatory and protection activities followed by the recovery of components for the Research and Development program.

The next step in the cycle is the mechanical demolition of the span, with clean-up as the last step. After the holidays, work teams will repeat this cycle five times to demolish all of the spans over the Île des Sœurs jetty.

Brossard

Work to construct the Brossard jetty is also well underway, and the jetty along the shoreline has now

reached its full width and length.

After the holidays, a small section of jetty will be built along the St. Lawrence Seaway. On the side of the seaway dike, a team is assembling the barges and marine equipment that will be used to deconstruct the bridge from over the river.

Photo: Patrick Curti, 2020



Champlain Bridge Material Reuse
Competition: Giving a second life to
over 400 steel components



Champlain Bridge
Deconstruction
Material Reuse
Competition

JCCBI has launched its pan-Canadian competition to reuse materials from the original Champlain Bridge. This competition is part of a circular economy approach to reclaim materials according to the 4RE, in which materials are reduced, reused, recycled or recovered as a priority and only then eliminated.

JCCBI is calling on professionals from various sectors to express their interest in using steel components at a symbolic price for their projects by May 31, 2021.

Areas: arts, architecture, construction, engineering, municipal, urban planning, infrastructure

To learn more about the Material Reuse Competition, to consult the Component Catalogue, or to express your interest in just a few clicks, visit our website

<https://jacquescartierchamplain.ca>

THE RIVER GIANT

To deconstruct the original Champlain Bridge’s 30 spans over the St. Lawrence River, NHSL and its engineering partners developed a unique piece of equipment that includes a catamaran barge 76 m long by 40 m wide, or an area equivalent to two NHL hockey rinks! What a giant!

A catamaran barge like you’ve never seen before

After arriving on site at the end

of December 2020, the catamaran barge started being equipped with a system of six lifting towers that can support up to 4,800 tonnes and that will hold the deconstruction platform. Added to this remarkable machine will be about a dozen hydraulic systems designed to frequently move huge components, with loads of over 30,000 pounds or over 13,000 kilos.



Innovation with 4D functionality

NHSL is using 4D to design, model and position each component in order to simulate its movements and verify the set-up and operation of the system of the catamaran barge. In addition to conducting “standard” structural and stability studies for the barge, NHSL also had to factor the river currents into its modelling.

This unique and ingenious piece of engineering will begin its journey in spring 2021, when a pull barge and four tugboats will start positioning it under each span to be deconstructed within an accuracy of less than 15 cm. In the meantime, NHSL is starting up different types of equipment on the catamaran barge to bring this future river giant to life.

MIGRATION CORRIDORS WELCOME THEIR FIRST AQUATIC VISITORS

Since the start-up of the counting systems in the two fish migration corridors, JCCBI has captured impressive images of migratory species passing through the area. Our first swimmers to pose for the camera were a magnificent 130 cm lake sturgeon and a 45-cm walleye. The biology team will carefully keep and analyze all images and data to effectively document the species and number of fish using the corridors.

Great results

JCCBI is thrilled that the corridors are already being used even though temperatures aren't optimal and the river still has ice. This shows how effective the corridors are at minimizing the impact of the jetty during the deconstruction work. What a great example of how the environment can still be protected during construction projects!



STAY INFORMED !

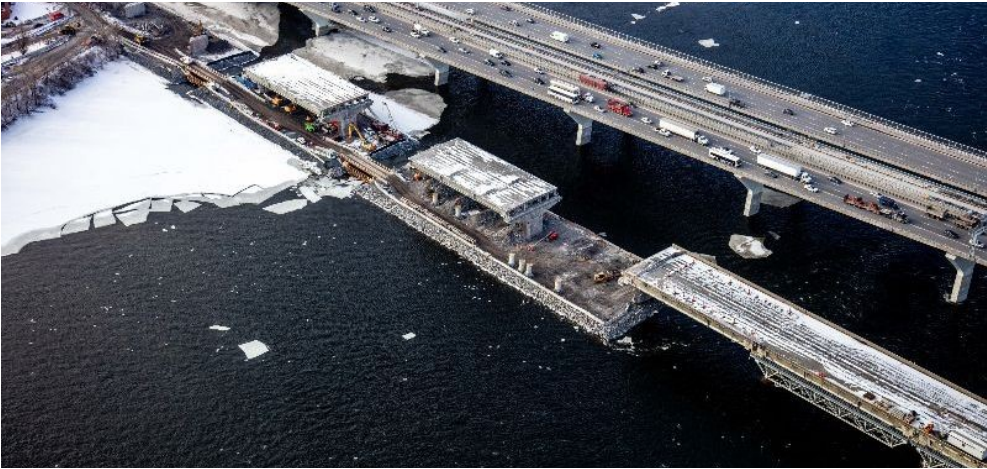
You can also keep up with the project through the JCCBI team's many communication tools:

- Twitter: [@pontChampBridge](#)
- Website: [deconstructionchamplain.ca](#)
- [Deconstruction newsletter](#)
- [Work advisories](#)
- [News](#)



TELL US YOUR THOUGHTS ON THE NEW CHAMPLAIN BRIDGE

[illegible]



Deconstruction of the Champlain Bridge



Pier 1E surrounded by a jetty for the deconstruction of the east cantilever span



General view of the Île des Sœurs jetty (January 26, 2021)

TAPE

ALEXANDRA MENDES
MEMBER OF PARLIAMENT
VALOUR BUILDING SUITE 1230
OTTAWA ON K1A 0A6



FOLD

SUBSCRIPTION

JCCBI has an email alert system to keep you informed of the status of its network in real time. Their email alerts notify subscribers about major events on their structures, particularly traffic hindrances.

To subscribe to this service, please check the structure(s) for which you wish to receive updates and enter your e-mail address at the link bellow!

For real-time information about work performed by JCCBI, you can also follow the Twitter accounts for each of their structures:

[@pontJCBridge](#), [@SecBonaventure](#),

[@pontHMBridge](#), [@mobiliteactive](#) and

[@pontChampBridge](#).

To help you plan your travel, you can take a look at [Live Traffic](#) on their website which includes in-progress road closures or obstructions, cameras, and the seven-day work schedule.

The better informed you are, the better you can plan your travel.

<https://jacquescartierchamplain.ca/jccbi-alerts/?lang=en>

UPCOMING EVENT

1
JULY

VIRTUAL CANADA DAY CELEBRATION
More information to come

JUN

VIRTUAL PUBLIC MEETING PJCCI
Simply subscribe to the project newsletter to receive the invitation.

Information and photos in this publication come from JCCBI, including the monthly newsletter on the deconstruction project and the website deconstructionchamplain.ca